



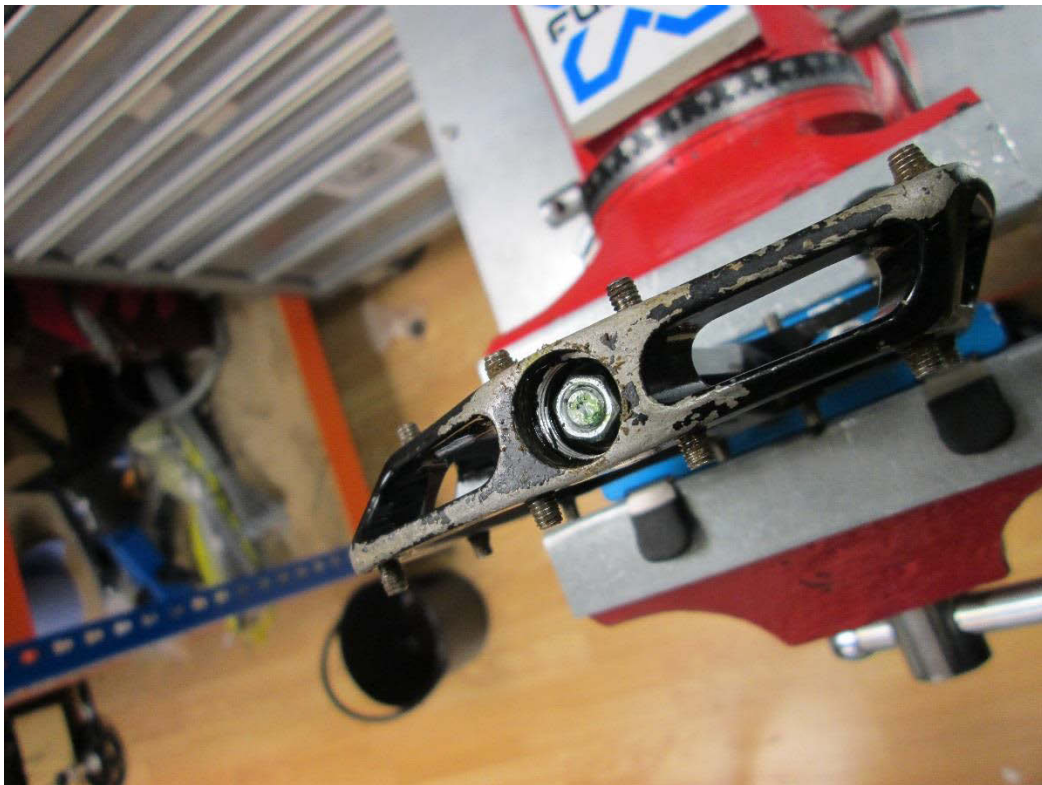
DMR 2014 V12 Service Guide

**please note that the RH pedal has a LH threaded nut so please do not force the nut to come undone, if you struggle then make sure you are pushing the right way.*



Tools Needed: 6mm Allen Key, DMR Vault & V12 Tool, 1/4" Ratchet with 9mm Socket, 1/4" Torque Wrench

Parts Needed: 2014 V12 Service Kit.



Remove the 6mm Alloy end cap to expose the 9mm nut. *Magnesium pedals have gold end caps*



Remove the 2 old rubber seals and clean the axle of any old dirt and grime and inspect for any imperfections on the bearing surfaces.



Mount the DMR pedal tool in the vice with the threaded end out.

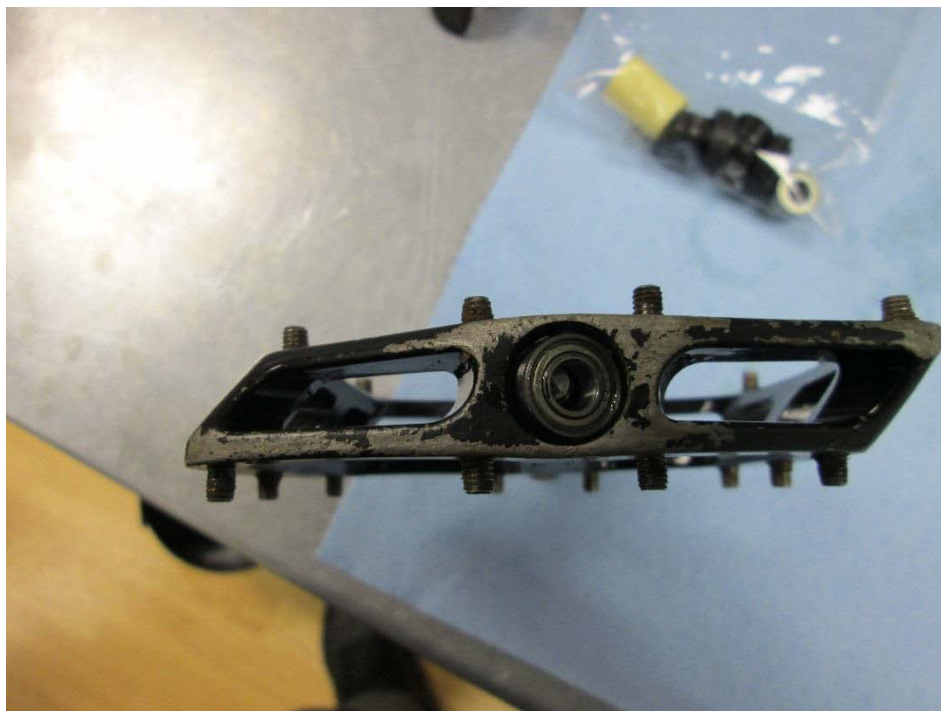


Thread the Pedal body onto the threaded part of the tool whilst applying pressure to engage with the bushing.

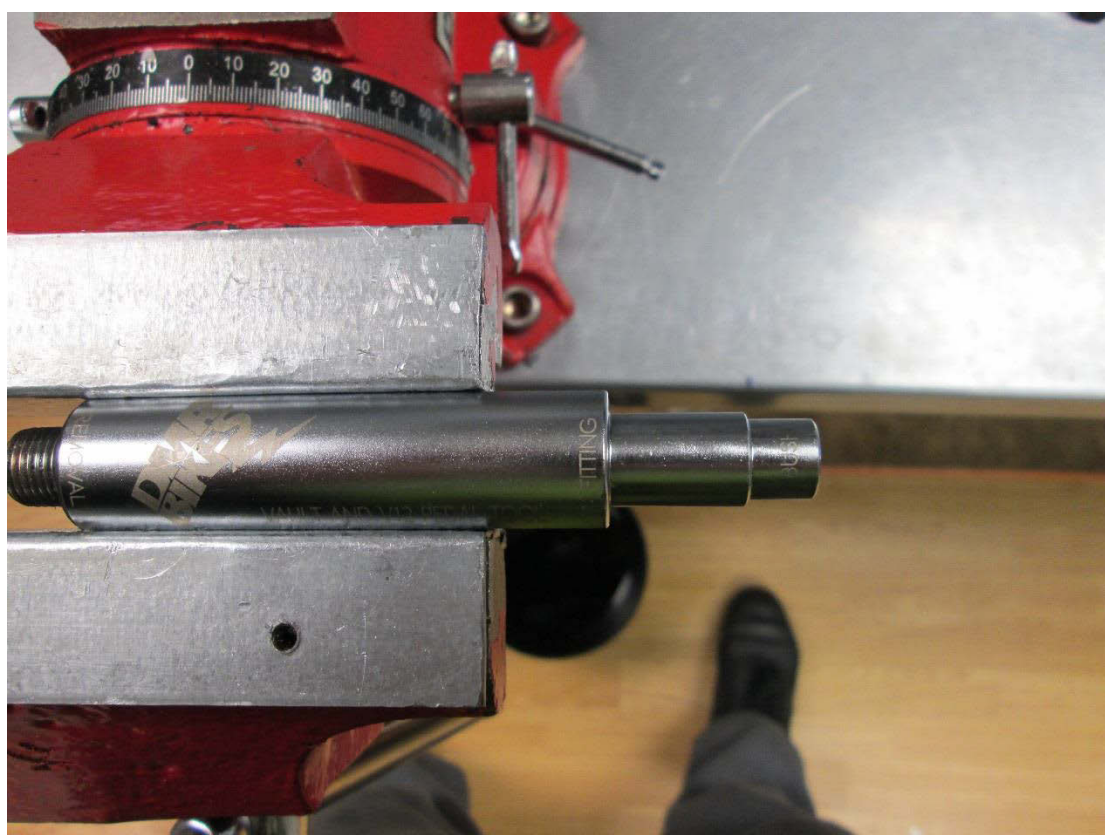


Once you feel that you have enough engagement with the bushing, pull the pedal body and the bushing shall follow.

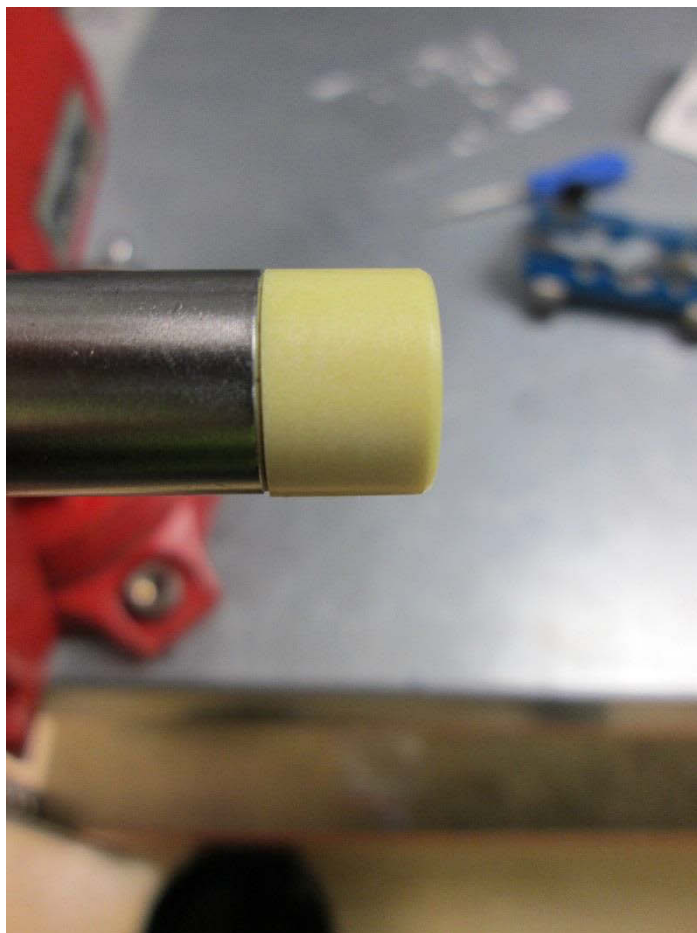
2nd December 2014



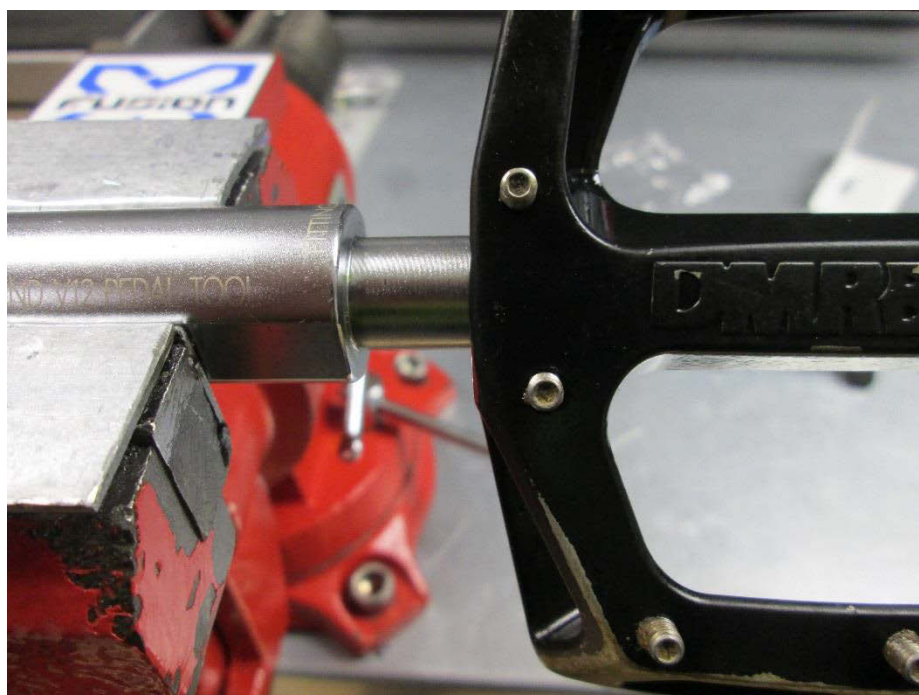
Using the axle you can gently push the old cartridge bearing out the other end, no hammering needed.



Flip the DMR pedal tool around in the vice so the end marked *BUSH is sticking out.



Slide the new bushing onto the tool ready to be pushed into the pedal body. Notice that one end of the bushing has a slight chamfered edge, that enters the pedal first.





Making sure the body is clean of all dirt & debris, square the body up to the bushing and push with your hands until it stops.

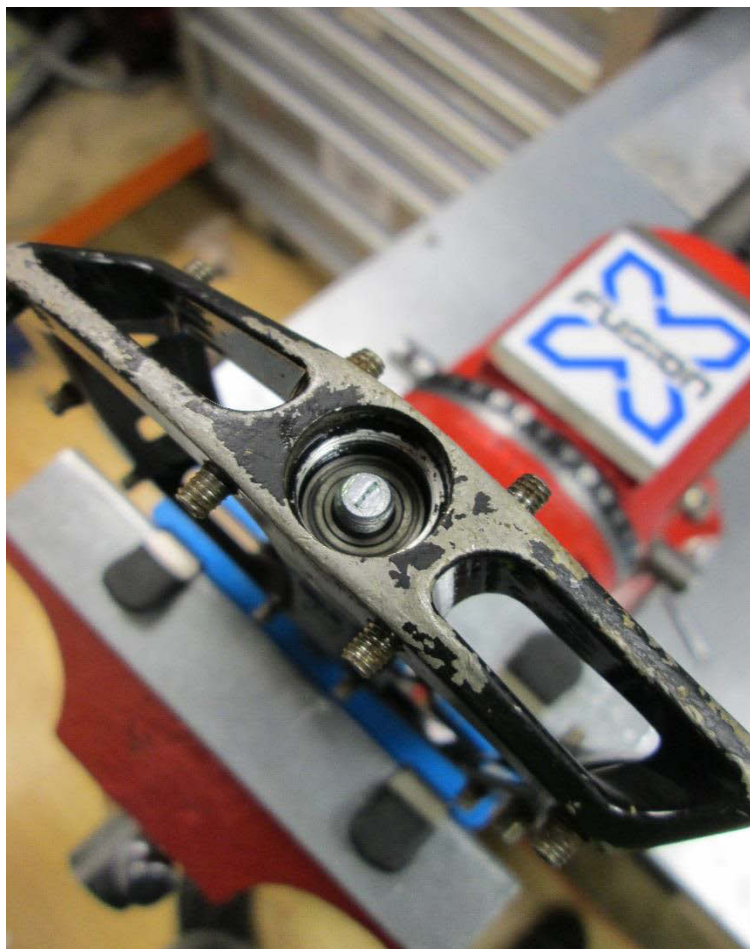


Next, place the cartridge bearing in the pedal flat against the shoulder in the body.





Slide the 2 new rubber seals onto the clean axle and grease the bearing/bushing contact points ready for the pedal to be re-assembled.



Slide the pedal body onto the axle making sure the axle protrudes through the cartridge bearing.



Install the new nut and torque to a maximum of 10Nm then fit the 6mm alloy end cap.



And there you have it, a fully serviced V12 pedal.

**please note that the RH pedal has a LH threaded nut so please do not force the nut to come undone, if you struggle then make sure you are pushing the right way.*

Parts Used: DMR Vault / V12 Service Tool - <http://shop.upgradebikes.co.uk/Catalogue/Pedals/DMR-V12-and-Vault-Pedal-Servicing-Tool>

DMR 2014 V12 Service Kit – **not on B2B yet, code: DMR-S12-KIT-V2**